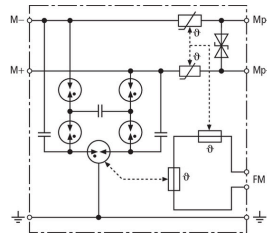


BVT KKS APD 36 (918 421)

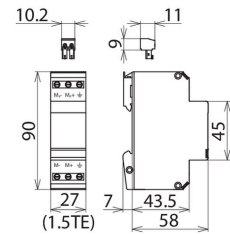
- For voltage measuring circuits
- Plug-in remote signalling contact
- For installation in conformity with the lightning protection zone concept at the boundaries from $0_A - 2$ and higher



Figure without obligation



Basic circuit diagram BVT KKS APD 36



Dimension drawing BVT KKS APD 36

Energy-coordinated combined lightning current and surge arrester for protecting voltage measuring circuits (yellow colour). Plug-in remote signalling contact (break contact) indicates overload (thermal monitoring of the discharge paths). Installation into steel-sheet enclosure recommended. A low impulse sparkover voltage is achieved by capacitive control.

| Type | BVT KKS APD 36 |
|--|--|
| Part No. | 918 421 |
| SPD class | TYPE 1 PI |
| Nominal voltage (U_N) | 36 V |
| Max. continuous operating voltage (d.c.) (U_C) | 36.8 V |
| Nominal current (I_N) | 0.05 A |
| D1 Lightning impulse current (10/350 μ s) per line (I_{imp}) | 3.5 kA |
| D1 Total lightning impulse current (10/350 μ s) (I_{imp}) | 7 kA |
| C2 Nominal discharge current (8/20 μ s) per line (I_n) | 20 kA |
| C2 Total nominal discharge current (8/20 μ s) (I_n) | 40 kA |
| Voltage protection line-line for I_n C2 (U_P) | ≤ 65 V |
| Voltage protection level line-PG for I_n C2 (U_P) | ≤ 800 V |
| Voltage protection level line-line at 1 kV/ μ s C3 (U_P) | ≤ 48 V |
| Voltage protection level line-PG at 1 kV/ μ s C3 (U_P) | ≤ 600 V |
| Series resistance per line | 55 ohms |
| Cut-off frequency line-line (f_C) | 4 dB at 1 MHz (100 ohms) |
| Capacitance line-line (C) | ≤ 1 nF |
| Capacitance line-PG (C) | ≤ 10 pF |
| Operating temperature range (T_U) | -40 °C ... +80 °C |
| Degree of protection | IP 20 |
| For mounting on | 35 mm DIN rails acc. to EN 60715 |
| Connection (input / output) | screw / screw |
| Cross-sectional area, solid | 0.5 mm-6 mm ² |
| Cross-sectional area, flexible | 0.5 mm-4 mm ² |
| Earthing via | screw terminal |
| Enclosure material | thermoplastic, UL 94 V-0 |
| Colour | yellow |
| Test standards | IEC 61643-21 / EN 61643-21 |
| Type of remote signalling contact | break contact |
| Switching capacity (d.c.) | 250 V / 0.1 A, 125 V / 0.2 A, 75 V / 0.5 A |
| Switching capacity (a.c.) | 250 V / 0.5 A |
| Cross-sectional area for remote signalling terminals | max. 1.5 mm ² |
| Weight | 118 g |
| Customs tariff number (Comb. Nomenclature EU) | 85363010 |
| GTIN | 4013364094901 |
| PU | 1 pc(s) |

We reserve the right to introduce changes in performance, configuration and technology, dimensions, weights and materials in the course of technical progress. The figures are shown without obligation.