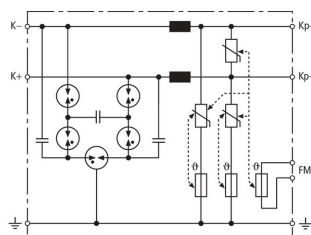


BVT KKS ALD 75 (918 420)

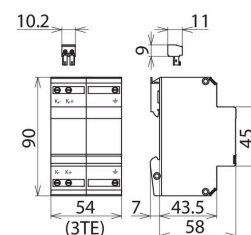
- For protective circuits
- High nominal current
- For installation in conformity with the lightning protection zone concept at the boundaries from $0_A - 2$ and higher



Figure without obligation



Basic circuit diagram BVT KKS ALD 75



Dimension drawing BVT KKS ALD 75

Energy-coordinated combined lightning current and surge arrester for protecting the rectifier in the protective circuit (red colour). Plug-in remote signalling contact (break contact) indicates overload (thermal monitoring of the varistors). Installation into steel-sheet enclosure recommended. A low impulse sparkover voltage is achieved by capacitive control.

Type	BVT KKS ALD 75
Part No.	918 420
SPD class	TYPE 1 PI
Nominal voltage (U_N)	70 V
Max. continuous operating voltage (d.c.) (U_C)	75 V
Nominal current (I_N)	12 A
D1 Lightning impulse current (10/350 μ s) per line (I_{imp})	3.5 kA
D1 Total lightning impulse current (10/350 μ s) (I_{imp})	7 kA
C2 Nominal discharge current (8/20 μ s) per line (I_n)	20 kA
C2 Total nominal discharge current (8/20 μ s) (I_n)	40 kA
Voltage protection line-line for I_n C2 (U_P)	≤ 420 V
Voltage protection level line-PG for I_n C2 (U_P)	≤ 420 V
Voltage protection level line-line at 1 kV/ μ s C3 (U_P)	≤ 370 V
Voltage protection level line-PG at 1 kV/ μ s C3 (U_P)	≤ 370 V
Series resistance per line	5 μ H
Cut-off frequency line-line (f_C)	1 MHz
Capacitance line-line (C)	≤ 2 nF
Capacitance line-PG (C)	≤ 2 nF
Operating temperature range (T_U)	-40 °C ... +80 °C
Degree of protection	IP 20
For mounting on	35 mm DIN rails acc. to EN 60715
Connection (input / output)	screw / screw
Cross-sectional area, solid	0.5-6 mm ²
Cross-sectional area, flexible	0.5-4 mm ²
Earthing via	screw terminal
Enclosure material	thermoplastic, UL 94 V-0
Colour	red
Test standards	IEC 61643-21 / EN 61643-21
Type of remote signalling contact	break contact
Switching capacity (d.c.)	250 V / 0.1 A, 125 V / 0.2 A, 75 V / 0.5 A
Switching capacity (a.c.)	250 V / 0.5 A
Cross-sectional area for remote signalling terminals	max 1.5 mm ²
Weight	212 g
Customs tariff number (Comb. Nomenclature EU)	85363010
GTIN	4013364094895
PU	1 pc(s)

We reserve the right to introduce changes in performance, configuration and technology, dimensions, weights and materials in the course of technical progress. The figures are shown without obligation.